



# The Blurb

Newsletter of The Phil-Mont Mobile Radio Club  
Public Service Since 1949

[www.phil-mont.org](http://www.phil-mont.org)

Volume 76 Number 9

## Phil-Mont's Net Control Summit





# The Prez Sez...

## Fellow Phil-Monters,

Back to school, back to work. But Phil-Mont keeps playing radio. We still have great things in the fall lineup to finish out the year.

Thanks to all the dedicated net control operators who came out for the 2nd Annual NCO Summit. It was great to be together and a good way for the club to thank the NCOs for all the hours they dedicate to running the nets every day. We had good discussions, good food and a nice time overall.



If you haven't already, make sure to sign up for the MS-150 as a communicator or driver. It's a great event, a great way to practice radio in the field and overall a good thing to do for a good cause. There's never enough volunteers, so get on the list today. See: <https://www.n3mss.org/>

We're always looking for submissions to The Blurb, so if you have an idea for an article, write it up and send it in. There's some great ones this month, keep them coming.

We're also looking for members to be featured in the semi-regular Ham I Am member spotlight feature. There's over 200 of us, so there shouldn't be a shortage of members to be featured. We want to learn about you and your gear. Contact Dave, K3DFG to get on the list, it's easy!

This is the best hobby ever with unlimited possibilities. It is always there whether you play daily, weekly, or monthly. We're all busy but have our club to keep us together through radio. So don't stress it and keep having fun playing radio. We play radio; that's what we do. Play, Break, Learn. See you at a club event soon.

Looking forward to the Fall events.

73, Rich, AA3RC

Remember, this is **YOUR HOBBY, YOUR Club, YOUR repeaters. USE them. MONITOR them.**

**BE A REPEATER GREETER.**

Answer calls when you can.

Let's leave **NO CALL UNANSWERED.**

**FAIL = First Attempt In Learning**

# The Radio Amateur's Code

*The Radio Amateur is:*

**CONSIDERATE...** They never knowingly operate in such a way as to lessen the pleasure of others.

**LOYAL...** They offer loyalty, encouragement and support to other amateurs, local clubs, the IARU Radio Society in their country, through which Amateur Radio in their country is represented nationally and internationally.

**PROGRESSIVE...** They keep their station up to date. It is well-built and efficient. Their operating practice is above reproach.

**FRIENDLY...** They operate slowly and patiently when requested; offer friendly advice and counsel to beginners; kind assistance, cooperation and consideration for the interests of others. These are the marks of the amateur spirit.

**BALANCED...** Radio is a hobby, never interfering with duties owed to family, job, school or community.

**PATRIOTIC...** Their station and skills are always ready for service to country and community.

*- adapted from the original Amateur's Code, written by Paul M.*

# Get the Net!

There's no ham radio without YOU!

Get on the air and share! Operate, cooperate, & celebrate ham radio!

## Phil-Mont's Drive Time Net

*Join us every Monday-Friday 5 to 6pm on our VHF Repeater, Allstar or Echolink*

## DENn-Digital Education Net for newbies

*Every Tuesday 2000-2130 on our VHF repeater with Zoom back channel for video only. Watch our Groups.io for posts tagged #DENn for details.*

## Philadelphia ARES

*Sundays 8 PM ET on our VHF Repeater, Allstar or Echolink  
OMIK Net Sat. 11am*

## KC3BVL VHF and UP Nets

*All nets upper sideband but CW ok*

*Fridays are to get your VHF station running smoothly and find out who you can work.*

7:30pm	144.160	8pm	50.160
8:30pm	222.150	9pm	432.160

*Microwave Wednesdays are to get your microwave station up and running smoothly.*

7:30pm	903.100	8pm	1296.100
8:30pm	2304.100	9pm	5760.100

## **CLUB REPEATERS**

VHF: 147.030 MHz  
(+offset 91.5 PL)

### REMOTE VHF INPUTS:

Bucks County and North PL 88.5  
(147.030)-Currently off-air

Delaware County West and South  
PL 100.0 (147.030)

UHF: 444.80 MHz Yaesu  
System Fusion WiresX

ECHOLINK W3QV-R &  
ALLSTAR 47970

Phil-Mont Simplex Frequency  
147.510MHz PL91.5 TSQ

**CQ! CQ! CQ!**



**Calling CQ for New  
Net Control  
Operators!**

[Click Here and Sign Up To-day! It's a Fun Way to Meet Our Members!](#)

*The Blurb*

## Sunday Morning Nets

*Tune in on any or all for a Sunday morning 'Hello!'*

### 0930 ET:

VHF Repeater, Allstar  
or Echolink

### 1000 ET:

75 meter Net (3.993  
MHz LSB +/-QRM)

## **September Sunday Net Control Schedule**

9/7/2025 KB3SJS

9/14/2025 W3UP

9/21/2025 WA3GM

9/28/2025 W3MHP



# Club Business

## **NEXT GENERAL CLUB MEETING:**

**Wednesday, September 10th**

Giant Supermarket 315 York Rd.

Willow Grove, PA 19090

**5:30PM Yack & Snack**

**6:30PM Meeting Starts**

**7PM Presentation**

## **September Presentation:**

**MS-150: What you need  
to know + Q & A**

## **This Month's Birthdays**

*WA3GM Gregory Malone 2-Sep*

*N3ZP Phil Zminda 4-Sep*

*KC3TIQ Jack Harding 8-Sep*

*KC3WHO Lori Eger 12-Sep*

*KC3GJX Jeffrey Golas 17-Sep*

*KB3SJS John Simon 23-Sep*

*Want your Birthday read on the Nets?  
Update your info at [hamclubonline.com](http://hamclubonline.com)*

## **New Club Members**

**Edwin "Carlos" Estrella, KC3WHJ, General**



**welcomes you!**

# Phil-Mont Membership Statistics

## September 2025

### Member Types Statistics: (Active Members)

REGULAR Membership	197
Honorary	3
Board Member	7
Officer	4
<b>Total</b>	<b>211</b>

Philadelphia



ARES

The Amateur Radio Emergency Service are trained licensed amateur radio operators providing radio communications as a public service in disaster situations. All licensed operators are welcome to join. To learn more join our [Groups.io](https://www.groups.io/g/philares) and visit [PHLARES.org](https://www.phlares.org).

**Join the A.R.E.S.  
Training Net**

**Every Sunday  
evening at 2000  
(8:00 PM)  
147.030 MHz**



# Ham Radio Challenge

Here's a fun checklist you September have seen in the group messages, but here it is again.  
GO PLAY RADIO. Let's see who can check all the boxes!

Band Worked	Mode Worked	Activity (or mode of op)
<input type="checkbox"/> - 2,200 M (135 kHz)	<input type="checkbox"/> - SSB	<input type="checkbox"/> - Repeater QSO (2 M and up)
<input type="checkbox"/> - 630 M (472 kHz)	<input type="checkbox"/> - CW	<input type="checkbox"/> - Repeater QSO (10 or 6 M)
<input type="checkbox"/> - 160 M (1.8 MHz)	<input type="checkbox"/> - AM	<input type="checkbox"/> - Simplex FM QSO (VHF/UHF)
<input type="checkbox"/> - 80/75 M (3.5/3.8 MHz)	<input type="checkbox"/> - FM	<input type="checkbox"/> - SSB QSO (VHF/UHF)
<input type="checkbox"/> - 60 M (5.3 MHz)	<input type="checkbox"/> - PSK (31, 63)	<input type="checkbox"/> - CW Contact
<input type="checkbox"/> - 40 M (7 MHz)	<input type="checkbox"/> - FT4	<input type="checkbox"/> - Contest Contact
<input type="checkbox"/> - 30 M (10.1 MHz)	<input type="checkbox"/> - FT8	<input type="checkbox"/> - Satellite and/or EME Contact
<input type="checkbox"/> - 20 M (14 MHz)	<input type="checkbox"/> - Other WSJT- X Modes (FSK441, JT6M, JT65, etc.)	<input type="checkbox"/> - Fox Hunt (ARDF)
<input type="checkbox"/> - 17 M (18 MHz)	<input type="checkbox"/> - JS8call	<input type="checkbox"/> - WinLink Contact
<input type="checkbox"/> - 15 M (21 MHz)	<input type="checkbox"/> - Packet (AX25)/APRS	<input type="checkbox"/> - EchoLink Contact
<input type="checkbox"/> - 12 M (24.9 MHz)	<input type="checkbox"/> - SSTV or Fast Scan ATV	<input type="checkbox"/> - WAS (work all 50 states)
<input type="checkbox"/> - 10 M (28 MHz)	<input type="checkbox"/> - Digital FM- DMR, D-Star, Fusion, etc.) or Hotspots	<input type="checkbox"/> - Work <u>50</u> countries
<input type="checkbox"/> - 6 M (50 MHz)		<input type="checkbox"/> - Work <u>100</u> countries
<input type="checkbox"/> - 2 M (144 MHz)	<input type="checkbox"/> - Pactor, Clover, Olivia, Throb, DominoEX, MT63, Thor, AMTOR, etc.	<input type="checkbox"/> - WAC- Work All Continents
<input type="checkbox"/> - 1.25 M (222 MHz)		<input type="checkbox"/> - POTA (Parks On The Air) or SOTA (Summits On The Air) Chaser Contact
<input type="checkbox"/> - 75 cm (440 MHz)	<input type="checkbox"/> - FAX or Hellschreiber	<input type="checkbox"/> - POTA or SOTA Activation
<input type="checkbox"/> - 33 cm (902 MHz)	<b>Club</b>	
<input type="checkbox"/> - Higher Microwave Bands	<input type="checkbox"/> - Attend an ARC meeting	<input type="checkbox"/> - POTA Activator
<b>Build or Install</b>	<input type="checkbox"/> - Present at ARC meeting	<input type="checkbox"/> - <u>Work</u> your State QSO party
<input type="checkbox"/> - New VHF/UHF Antenna	<input type="checkbox"/> - Head a committee	<b>Build/Test/Repair</b>
<input type="checkbox"/> - New HF Antenna	<input type="checkbox"/> - Attend a Hamfest	<input type="checkbox"/> - Electronics Kit or Homebrew
<input type="checkbox"/> - New Mobile Radio	<input type="checkbox"/> - Teach a Licensing Class or be a VE	<input type="checkbox"/> - Use an Antenna Analyzer or nano-VNA to measure
<input type="checkbox"/> - New Mobile Antenna	<input type="checkbox"/> - Mentor a new ham	<input type="checkbox"/> - Fix non-working Radio
<input type="checkbox"/> - Computer/Radio Interface	<input type="checkbox"/> - Write a newsletter article	<input type="checkbox"/> - Arduino, Rasp Pi microprocessor project or Program
<input type="checkbox"/> - New Operating Desk	<input type="checkbox"/> - Volunteer for Public Serv	

# Upcoming Club Events

Won't You Join Us...

in ***The DENn!***

Phil-Mont's *Digital Education Net for newbies!*

**Tuesday Evenings @8:00pm Zoom Backchannel @7:00pm**

W3QV Repeater: 147.030 MHz + 91.5

Allstar Node: 47970 Echolink: W3QV-R

*Don't let the name fool you!*

All are welcomed to join us and play. It doesn't matter if you are new to Ham Radio, new to digital modes, or are an already experienced ham and digital operator.

**We are here to play, learn, and test our equipment.**

With the digital modes if you can do it on the repeater you can do it pretty much everywhere, *including HF.*

*So come on out, test your setup, and **HAVE SOME FUN!***

**NET CONTROLS** KC3SMW, Greg—NY3J, Ron—W3ZO, Rob

## Upcoming DENn Topics

- Stay tuned to the groups.io group, September's topics TBD.



# Lighthouse Weekend

## PMRC International Lighthouse Weekend, August 16 – 17, 2025

Phil-Mont Mobile Radio Club again celebrated International Lighthouse Weekend by operating Special Event Station W3EM portable at the Turtle Rock Lighthouse along the Schuylkill River Trail, Saturday & Sunday, August 16 and 17th.

As guests of the Sedgeley Club, we set up adjacent to the lighthouse under canopy with a Yaesu FT891 and Wolf River 17' Whip. We operated 40 meters SSB and made 44 contacts, more than twice than last year. And by moving our station to the west side of the lighthouse close to the trail, we had many contacts and conversations with interested passersby.

Joining us were PMRC members Guy, WA3JZN; Drew, KC3UKF; Dick, K3ITH with grandson; KC3WHY, Stefania; and KE3YW, Bill. Also with us, guests Maitland, KC1MXH with friend Mary.

Our host Alex, lighthouse tenant, was very accommodating. We had access to a 120V outlet, bathroom facilities, and overnight storage. Plus, Alex assisted with set-up and tear down.

And many thanks to Bill, W3AOK, for providing the equipment, tables, canopy and a long list of other items.

We deeply appreciate the hospitality extended to PMRC by Alex and the Sedgeley Club.

We look forward activating "W3EM" again next year at Turtle Rock Lighthouse. Mark your calendar for the third weekend in August.

73,

Bob, K3NIE

# Lighthouse Weekend





# SOTA Activation

## SOTA Activation of Broad Mountain

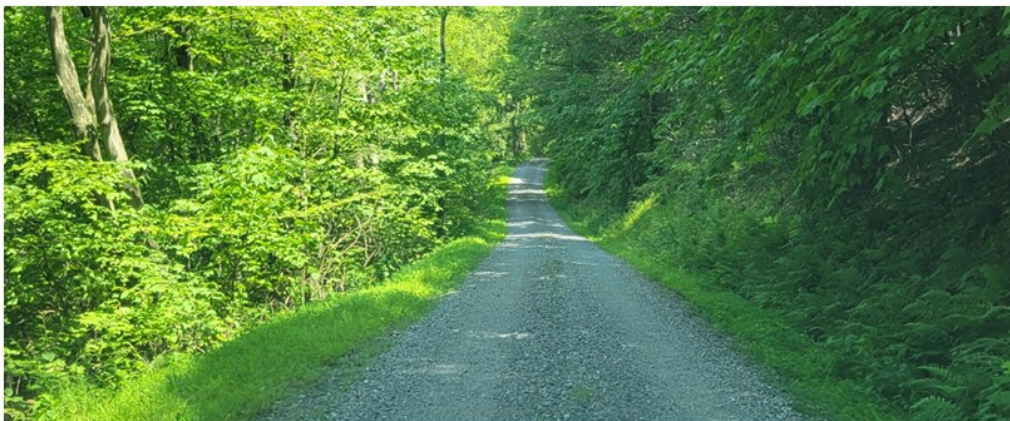
### Site details:

Summit Code: W3/SV-018  
Grid: FN10dq  
County: Huntingdon, PA

Elevation: 2388ft  
Lat/Long: 40.6815, -77.7386



This Summits-on-the-Air (SOTA) site is located within Rothrock State Forest, Pennsylvania. Specifically, it is at the Greenwood Fire Tower. This is a lovely location in the Central PA mountains. Once you get to the state forest, you have 30 minutes of driving on gravel forest roads. At the time of my visit, these were in pretty good shape, but at other times of the year, they can take a beating from the weather.



It was a short 2000ft hike, up-hill, from the parking spot to the fire tower. Unfortunately, there is no view from the base of the fire tower, and climbing it is prohibited.



This summit actually took me two attempts to activate it. The first try was on Friday, 11 July 2025. I took the Icom 705 and my Arrow Antenna. 10W. Only made two contacts, on 2m FM. W3AWG and KC3CYM. This was not that surprising, as it was a Friday afternoon. I guess folks were still at work. Thus, this activation was a failure.

This site is 140 air miles from Philadelphia. I have made 2m contacts of that distance before. But not today.

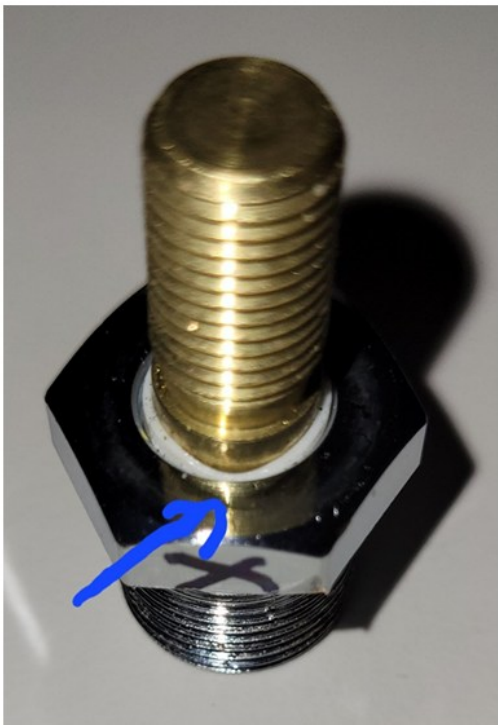


# SOTA Activation



Interestingly, there was a 100km trail marathon the following day, which local hams were doing radio support for. The runners had 23 hours to complete it. I cannot imagine running 100km. *In the woods. Overnight.* That is some serious level of commitment.

So, I had run out of time, and had to pack up and retreat. I knew I was going to be back in the area in a few weeks, and planned to try again.



The story has to take a diversion here. At the 2024 Hamvention in Xenia, I had purchased a Wolf River Coil antenna setup. I had heard good things about them, and thought it would be useful for my SOTA activations. Up to this point, all my activations have been on 2m FM and SSB, never had I taken HF gear. All the reviews I found said how easy it was to get on the air with this antenna.

When I set it up and tried it out, I could not get it to tune up. No matter how I adjusted it, it would not tune. Actually, nothing I did to adjust it made any difference to the analyzer. Looking online, including the company support FAQ, all the answers pointed to "bad coax". Well, the coax tested fine. No one had the answer to my problem. Frustrated, I threw it in a box and decided to "think about it" for a while.

Time passed, and I was checking out something else with a multimeter, and thought to meter the base of the antenna for conductivity. It was open, at DC, as it should be. Connecting coax, it was no longer open at DC, but presenting about 2M ohms of resistance. Now, this was interesting. Again, the coax itself was fine.

Investigating it further, it turns out that the coax to 3/8 stud had a malformed insulator in it. Some of the deformity is visible, but who knows what the rest of it looked like inside.

Conveniently, I had another one of these parts, and swapped it out. The antenna was now tunable!



# SOTA Activation

I went back to Rothrock on Saturday, 2 August 2025. This time, I took just my Yaesu FT8900 and the Arrow Antenna. This puts out 50W, instead of the IC-705's 10W. But again, I only managed two contacts on 2m FM. And one of those was pre-arranged. It was my daughter, who was hiking elsewhere in the forest that day. The other contact was K3FQF, who was mobile at the time.



However, I brought another friend along, who owns a Yaesu FT891. I setup my Wolf River antenna, and we got it tuned beautifully on 40m. Using his radio, I made two more contacts on this band. One was a special event station, KD3KA near Pittsburgh, which was promoting the 100th anniversary of a KDKA shortwave experiment. The other contact was W2RES in SNJ. Both were strong contacts. These were my first SOTA contacts on HF.

Then, I was out of time. I was needed elsewhere and had to pack up. At least I got the required four contacts. This is why I don't spot myself for these activations. I can never guarantee when I will be onsite, or how long I can stay.

One of these days, I will have a day on a mountain and not have anything else on my agenda.





# POTA Report

## POTA Report: Activating the District

Andrew Chen (W3AWC) callsign.w3awc@gmail.com

I've been absent from the nets for quite some time now and it seems to be because I am always traveling somewhere on Thursdays. Recently, on a trip down to Virginia, I had a chance to activate the place I called home for 6 years; Washington D.C. Aside from many monuments and memorials around the National Mall, one of the largest parks to activate in the District is Rock Creek Park. The park itself begins in Georgetown, just off the Potomack and continues north all the way up the border with Maryland. From there a trail (intersecting with some roads that are closed on the weekends) can continue to take you up through Maryland for some ways.

Anyway, I had checked the map before I traveled and picked what I thought would be an ideal location to try and activate the park. I drove into the park a ways and as I did traffic got lighter and lighter. When I arrived at my pre-chosen picnic area, there were no other cars in sight. After I had set up my rig (clamping a vertical antenna to a park grill) I came to a realization that might make my activation all the more challenging, I had no cell service with which to spot myself... As the name implies, Rock Creek Park follows a creek, which at one point must have been a mighty river as I had foolishly placed myself in somewhat of a cellular dead zone in the middle of DC.

After struggling on side band for some time, I decided to try some FT8. But then another problem appeared. I suppose my laptops clock came slightly out of sync over the weeks because I was decoding nothing, and I could not connect to my phone as a hotspot to update the time. Fine, surely someone must be able to hear me on CW 40. After 40 minutes of struggling, I came to the late realization that if the valley is blocking the cell towers from me, how much of my signal is being blocked by the valley...

I decided to pack things up and try setting up in a parking lot closer to civilization. When I got there and had some cell service, I realized my CW activity was spotted on the RBN. So something was getting out there! It took almost another hour but I managed about 12 of 13 contacts total. Most on CW and most from areas such as TX, AR, and KS.

The lesson learned: If you're ever going to operate close to running water, it is probably prudent to check a topo map first.

**Final Setup. Antenna angled on car hood to avoid branches of the above tree**



# Upcoming Club Events

## MARK YOUR 2025 CALENDARS

### Fall Radio Activities

- September 13th—PMRC Radio Labs
- September 20th—POTA-Mania
- October 10-11-12—OKT-POTA-Fest

**What an amazing lineup. Get ready for some serious fun.  
Details to follow.**



# Upcoming Hamfests



**Gloucester County  
Amateur Radio Club  
W2MMD**

*Celebrating 66 Years Of Service To Amateur Radio & Our Community*  
Established In 1959



*7<sup>th</sup> Annual ARRL SNJ Section Convention*

**47<sup>th</sup> Annual HamFest : Sunday, September 7, 2025**

**ATTENTION HAM RADIO ENTHUSIAST!**

**Check out: [hamfest.w2mmd.org](http://hamfest.w2mmd.org)**

It's that time of year again. To all those brass pounders, DXers, DMR users, Rag Chewers and anyone else smitten with anything electronic come check out both new and used radio gear, parts, tools and other items at the 47th annual HamFest at the Gloucester County Amateur Radio club at the 4H Fairgrounds on RT 77 in Mullica Hill, NJ.

The Club has implemented many improvements to make your experience more enjoyable and rewarding. Got equipment gathering dust? Pack your vehicle, purchase a General Admission ticket and add \$10.00 for a TAILGATE placard, park your vehicle, display your items and turn those no-longer needed items into cash. We have door prizes, food, and seminars. If you decide, you can stay at a motel that is only 10 minutes away.

Also new this year are on-line reservations for the covered buildings, an on-site help desk (146.46 simplex), improved signage and a professional PA system. On-line reservations are in our website– click on seller– covered spaces, scroll down and open HamFest Vendor Reservations.

My name is Mike Resnick, N2WOQ. I am the reservation manager for covered building sites which are offered on a first come basis. Please email me at: [hamfest@w2mmd.org](mailto:hamfest@w2mmd.org) if you have any questions.



# Upcoming Hamfests

## HAMFEST

2025

Sunday, September 14th, 2025 - 8am - 1pm



Moose Lodge 1336  
705 Stokes Mill Rd  
East Stroudsburg, PA 18301

### Featuring:

- ✓ Hot & Cold Food
- ✓ Beverages
- ✓ Hourly Giveaways
- ✓ Free Parking

### RAIN or SHINE

- ✓ Handicap Accessible
- ✓ Convenient Restrooms
- ✓ Hourly Door Prizes!
- ✓ Grand Prize Drawing!

**Huge Field and Parking Lot! Large Open Side Pavillion!**

Talk-in: 146.865MHz PL+100.0 • Phone 570-350-1185 • email: 3w3fnz@gmail.com

For more information please visit the EPARA website at: [www.qsl.net/n3is](http://www.qsl.net/n3is) Find us on Facebook: <https://www.facebook.com/epararadio>

**EASTERN PENNSYLVANIA**

**AMATEUR RADIO ASSOCIATION**

**Door Prizes:** There will be hourly cash door prizes throughout the day Vendors KJI Electronics and Sauder Electronics will be there!

**ADMISSION: Buyers: \$7 • Sellers: \$10**

**Vendors & Sellers: 6:00AM • Buyers: 8:00AM**

**Tailgate Outside or Table Space Inside our Pavilion**

**Club Table for Consignments**

**VE Session: Testing Begins at 11am**

**Sat/Comm Demonstration and Information**

Google Maps



EPARA Website



# N3ZP's Contest Corner

Here is the contest calendar report for September. It's a busy month with a bunch of QSO Parties, a VHF contest, some POTA, RTTY, a couple sprints and a CQWW DX contest.

## September 6 - September 7

Russian RTTY WW Contest - 1200Z Sept.6 - 1159Z Sept.7. Worldwide. 80, 40, 20, 15 and 10 Meters. RTTY. Rules: <https://www.contest.ru/russian-ww-rtty-contest-rules-en/>. Work some Russian DX in RTTY mode. There will be some very big signals and good operators.

Ohio State Parks on the Air - 1400Z - 2200Z Sept. 6. 80, 40, 20, 15 and 10 Meters, SSB. Rules: <http://ospota.org/>. Work some of the 76 Ohio State Parks. Many of these will be POTA sites, so great for Hunters or for Activators looking for Park-to-Park contacts.

Tennessee QSO Party - 1700Z Sept. 7 - 0300Z Sept. 8 All bands except WARC (60, 30, 17 and 12 Meters). CW, Phone, Digital. Rules: <https://tnqp.org/rules/>. Work 95 TN counties with county-line and Rover stations for more multipliers.

## September 13 - September 14

ARRL September VHF Contest - 1800Z Sept. 13 - 0300Z Sept. 14. 6 Meters and up. All Modes. Rules: <http://www.arrl.org/september-vhf>. Work Grid Squares on VHF/UHF Bands in any mode, even FM (Simplex only).

SKCC Weekend Sprintathon - 1200Z Sept. 13 - 2400Z Sept. 14. 160, 80, 40, 20, 15, 10 and 6 Meters. CW. Rules: [https://www.skccgroup.com/operating\\_activities/weekend\\_sprintathon/](https://www.skccgroup.com/operating_activities/weekend_sprintathon/). Straight Key Century Club CW Contest for operators using straight keys, side-swipers or bugs. Expect to hear some interesting CW activity on the bands and more slower speeds than other contests.

North American Sprint CW - 0000Z - 0400Z Sept. 14. 80, 40 and 20 Meters. CW. North America focused. Rules: <https://ncjweb.com/Sprint-Rules.pdf>. Work other North American stations and DX needing NA stations in this short evening sprint.

## September 20 - September 21

New Jersey QSO Party - 1400Z Sept. 20 - 0159 Sept. 21. 80, 40, 20, 15 and 10 Meters. CW, Phone, Digital. Rules: <http://www.k2td-bcrc.org/njqp/rules.html>. Here's one for NJ club members or just work some NJ stations.



# N3ZP's Contest Corner

Texas QSO Party - 1400Z Sept. 20 - 0200Z Sept. 21, 1400Z - 2000Z Sept. 21. All bands except WARC. All modes. Rules:<https://www.txqp.net/>. Work TX stations in 254 counties for multipliers with stations that are fixed, mobile or Rover. Big one for county hunting with some rare ones being active.

Iowa QSO Party - 1400Z Sept. 21 - 0200Z Sept. 21. All bands except WARC. CW, Phone, Digital. Rules:<http://www.w0yl.com/IAQP>. Work 33 IA counties on this active QSO Party weekend.

New Hampshire QSO Party - 1600Z Sept. 20 - 0400Z Sept. 21, 1200Z - 2200Z Sept. 21. 80, 40, 20, 15 and 10 Meters. CW, Phone, Digital. Rules:[https://w1wqm.org/wp-content/uploads/2025/08/NHQP\\_Rules.pdf](https://w1wqm.org/wp-content/uploads/2025/08/NHQP_Rules.pdf). Another state with 50 counties to work on this big QSO Party weekend.

Washington State Salmon Run - 1600Z Sept. 21 - 0700Z Sept. 21, 1600Z - 2400Z Sept. 21. 160, 80, 40, 20, 15, 10 and 6 Meters. CW, Phone. Rules:<http://salmonrun.wwdxc.org/>. In addition to fixed, mobile and Rover stations, there will be Expedition Class stations going to rare counties and parks for Field Day style operations.

Wisconsin Parks on the Air - 1600Z - 2300Z Sept. 20. All bands except WARC. All modes. Rules:[http://wipota.com/files/WIPOTA\\_contest\\_rules.pdf](http://wipota.com/files/WIPOTA_contest_rules.pdf). This one is geared for POTA fans with POTA parks being activated as goal of the event. Look for famous Youtuber and POTA enthusiast, Michael, KB9VBR to be in this one.

## September 27 - September 28

CQ Worldwide DX Contest RTTY - 0000Z Sept. 27 - 2400Z Sept. 28. Worldwide. 80, 40, 20, 15 and 10 Meters. RTTY. Rules:<https://www.cqwwrtty.com/>. The first CQWW contest of the season. Lots of stations on RTTY and you work everyone.

Maine QSO Party - 1200Z Sept. 27 - 1200Z Sept. 27. 160, 80, 40, 20, 15 and 10 Meters. CW, Phone. Rules:<http://www.ws1sm.com/MEQP.html>. Work stations in 16 ME counties. ME can be a harder state to get.

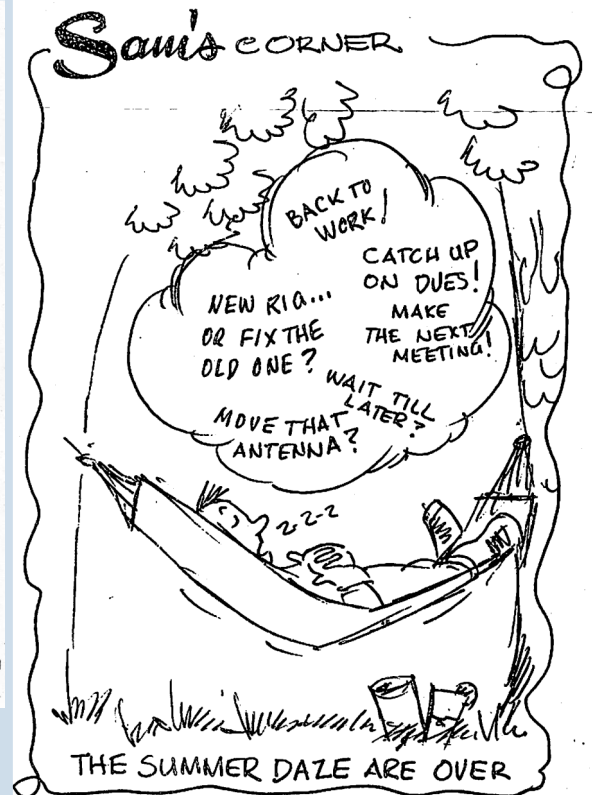
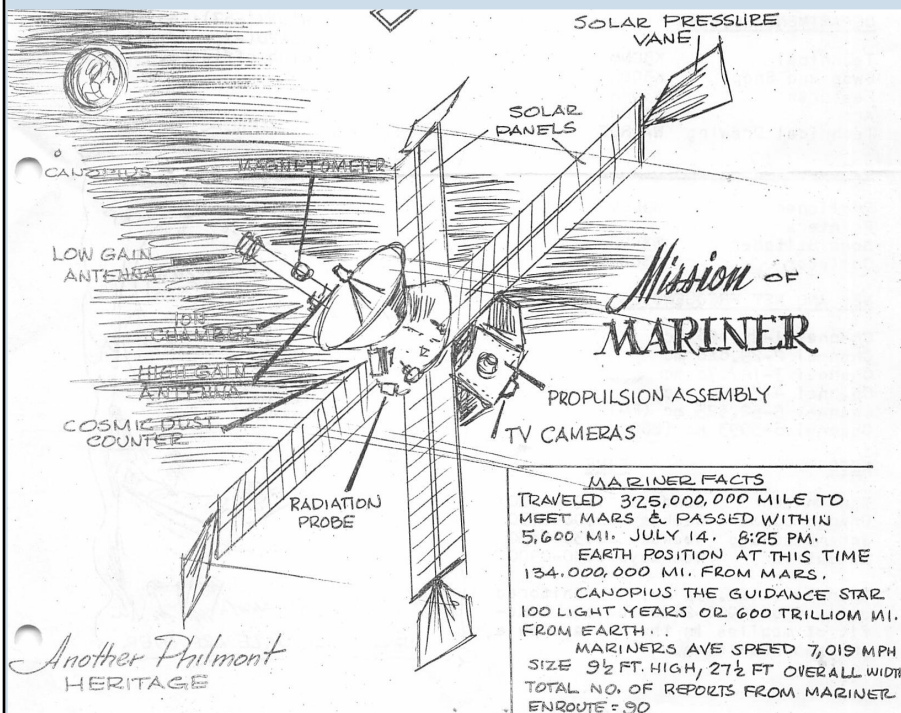
Masonic Lodges on the Air - 1400Z - 2200Z Sept. 27. 80, 40, 20, 15 and 10 Meters. SSB. Rules:<http://cqmorelight.com/rules>. Work stations operating at Masonic Lodges but you don't need to be a Mason to participate.

This completes September's activity. As always, you can reach out to me for assistance or advice in participating in a contest and logging.

Phil N3ZP

# From the PMRC Archive...

Here are some highlights from this month in Blurb history, September 1965...



## IT SEEMS TO ME

Page 2

There are many hams, expressing like opinion, promoting good thinking, working toward similar goals, but NOTHING ever comes of them.

Now, go back, read that line again, then ponder awhile, thinking of how it fits into your past or present. If there are others thinking like you do and nothing has developed, then let's ask the question. Why has nothing ever come of that good idea?

When you have such a common interest as ham radio, you form a club. If it is an idea that encompasses more than your club, it possibly needs greater support than a single club can provide.

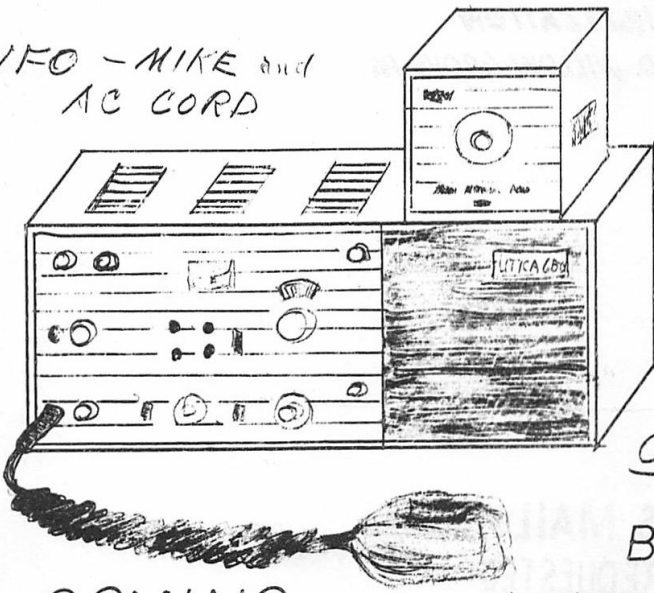
I hope at this point you are not asking yourself, "What's the big idea?", but "What is that Big Idea?", "What can we do about it?", and "How can we put it into action?"

Now that I have proposed an extra assignment for all you officers, how about expressing your opinion, as this proposal is merely a sheet of paper unless something is done - by you!

de W3CDY

# From the PMRC Archive...

Here are some highlights from this month in Blurb history, September 1965...

THE ANNUAL  
PHIL-MONT BANQUET  
NOV. 13<sup>th</sup> SAT. NITE  
WITH YOUR BEST GIRL  
DINE Prime Rib of Roast Beef  
or Lobster Tail  
DANCE TO THE MUSIC OF A POPULAR ORCHESTRA  
ENTERTAINMENT  
PRIZES?—OH YES!  
HERE IS A DANDY  
UTICA 650  
courtesy of UTICA COMMUNICATIONS CO. AND  
KASS ELECTRONICS DIST.  
With VFO—MIKE and  
AC CORD  
  
Built-in  
AC and  
12 VOLT-DC  
TRANSISTORIZED  
POWER SUPPLY  
COMPLETE  
BETTER  
GET YOUR TICKETS  
MORE PRIZES COMING



# The Last Page



*The Blurb* wants to hear from **YOU!**

Got a hot lead on antenna design? Soldering up a special circuit? Digging some new DSP? Reminiscing about some retro receivers? Septemberbe you have some goodies for sale?

## ***PMRC Officers for 2025***

### **Officers**

**President:** Rich AA3RC

**Vice President:** Greg KC3SMW

**Treasurer:** Jim NS3K

**Secretary:** Dave K3DFG

### **Board of Directors**

KC3GJX Jeff (25)

N3VIP Tony (26)

K3NOP Charlie (25)

N3PEG Peg (26)

KC3UDZ Muggs (25)

N3ZP Phil (26)

W3AOK Bill (A)

## **Blurb Editors:**

**Daniel Wagaman - W4GMN, SK**  
**Editor Emeritus**

**Richard Roth—AA3RC**



**[Club Email List](#)**